

## Concession 2E Railway Bridge

**Address:** Concession 2E

**Legal Description:** Bridge over the Road Allowance Between Concessions 1 & 2; Abutting Lots 12 and 13, Township of Tiny, County of Simcoe; Designated as Part 1 on Plan 51R-36576, being part of PIN 58386-0040.

**Current Owner:** Township of Tiny

**Date First Listed with Heritage Registry:** March 25, 2013

**By-law #13-018**



### History

This small bridge is one of the few heritage items left from the North Simcoe Railway in the Township of Tiny. The North Simcoe Railway was established in 1878 and the bridge became a vital part along the line running from Colwell in South Simcoe to Penetanguishene in the North, with its route encompassing almost the entire length of the Township of Tiny. There were stations at Colwell, Minesing, Anten Mills, Elmvale, Saurin, Wyevale, Perkinsfield and Penetanguishene. The bridge is an important visual link to the Railroad era in the Township of Tiny, as none of the stations of the past remain.

The North Simcoe Railway played an instrumental part in the Township's development, as it allowed for easier transportation of lumber and grain from the Township to markets in the South. It paved the way for increased settlement into the Township by the way of people and goods. The line allowed for increased tourism to the area, as it provided more efficient

transportation for people visiting the Township shores and that of early cottagers. During the First and Second World Wars, Township of Tiny volunteers that enlisted travelled over the bridge for training and service overseas. The line as well provided effective transportation of mail between surrounding areas and the Township. With four trains a day travelling the length of the Township from the north to south as early as 1879, many people's lives were affected by the line over the generations in the Township. The line was eventually abandoned in 1972, as new changes emerged in the transportation of goods and people. We have lost the stations along the route and the railway itself, but this bridge remains as a reminder of the historical connection between the North Simcoe Railway and the Township of Tiny.

Currently the bridge is a part of the Trans-Canada trail.

## Heritage Attributes

This small bridge is one of the few heritage items left from the North Simcoe Railway in our Township. None of the stations that used to grace the North Simcoe Railway still exist along the line. There were stations at Colwell, Minesing, Anten Mills, Elmvale, Saurin, Wyevale, Perkinsfield and Penetanguishene. All are gone.

As we know, the North Simcoe Railway was abandoned in 1972. We've lost the railway itself, the stations along the route, and if we don't take some action, we'll eventually lose the old bridges that helped create the line.

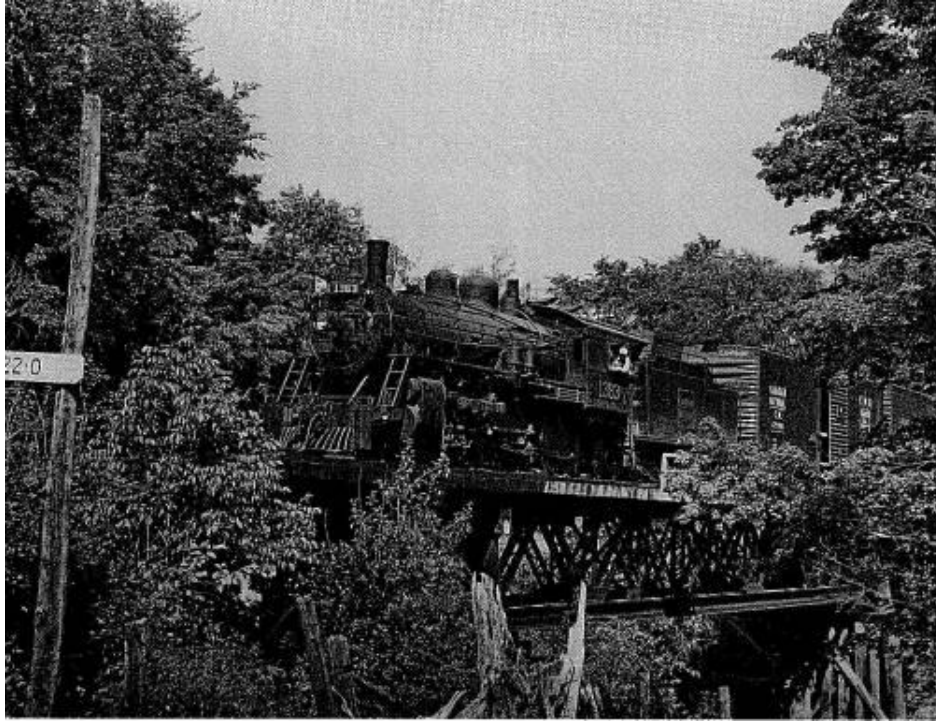
The importance to the Township of Tiny of this small railway bridge cannot be overstated. Bear in mind that not only timber and grain traveled over it to markets in the south, but everyone traveling into and out of the Township used that railway.

If we consider that there were 4 fundamental eras of settlement in the Township, they would be Aboriginal, the early French settlers followed by War of 1812 veterans, then Drummond Islanders that settled in the late 1820's, and the increase in development with the advent of the railway.

Consider if you will that almost everyone living in this Township has been impacted in some way by the North Simcoe Railway and the little bridge over the 2<sup>nd</sup> Concession. We would be hard pressed to find anyone in the Township today with family roots back just one generation that has not been impacted by that railway and that little bridge.

When you are trying to locate public transit or waiting for a courier to deliver a parcel in the Township, consider that four trains a day traveled the length of the Township from north to south as early as 1879.

Township of Tiny volunteers that signed up for service in the First, and Second World Wars, traveled over that little bridge for training and service overseas. Fortunate ones returned to their loved ones the same way. What family in Tiny has not been impacted by this fact alone? Think of the send offs at the stations in Perkinsfield and Wyevale – and then the tearful reunions on those stations after the war.



CNR 1383 between Saurin and Wyevale. Photographer John Rehor followed the freight from Allandale to Penetanguishene July 15, 1958.