



Temporary Road Closure – Intersection of Baseline Road South and Angela Schmidt Foster Road

Date: May 5, 2026

TAKE NOTICE that the intersection of Baseline Road South and Angela Schmidt Foster will be temporarily closed for road improvements. The temporary road closure will be in effect between Tuesday, May 12, 2026, and Thursday, May 14, 2026, from 9:00 a.m. to 3:30 p.m. each day.

While access will be available for emergency vehicles and residents that live in this section of road, alternative routes are strongly encouraged where possible.

Detour routes are in effect:

North Bound on Baseline Road South

- Turn west on Concession 8 East toward County Road 6 North
- Turn north on County Road 6 North toward Concession 9 East
- Turn east on Concession 9 East
- Turn north on Baseline Road South

South Bound on Baseline Road South

- Turn west on Concession 9 East toward County Road 6 North
- Turn south on County Road 6 North toward Concession 9 East
- Turn east on Concession 8 East
- Turn north on Baseline Road South

West Bound on Angela Schmid Foster Road

- Use Marshall Road
- North toward Balm Beach Road West
- South toward Ellery Sideroad

Motorists are advised to use alternate routes during this time. Drivers are asked to exercise caution in the area and obey traffic control personnel and signage.

A key map is available on page two of this notice.

For media inquiries, contact:

Jacqueline Brown, Communications Officer
jbrown@tiny.ca • 705-526-4204

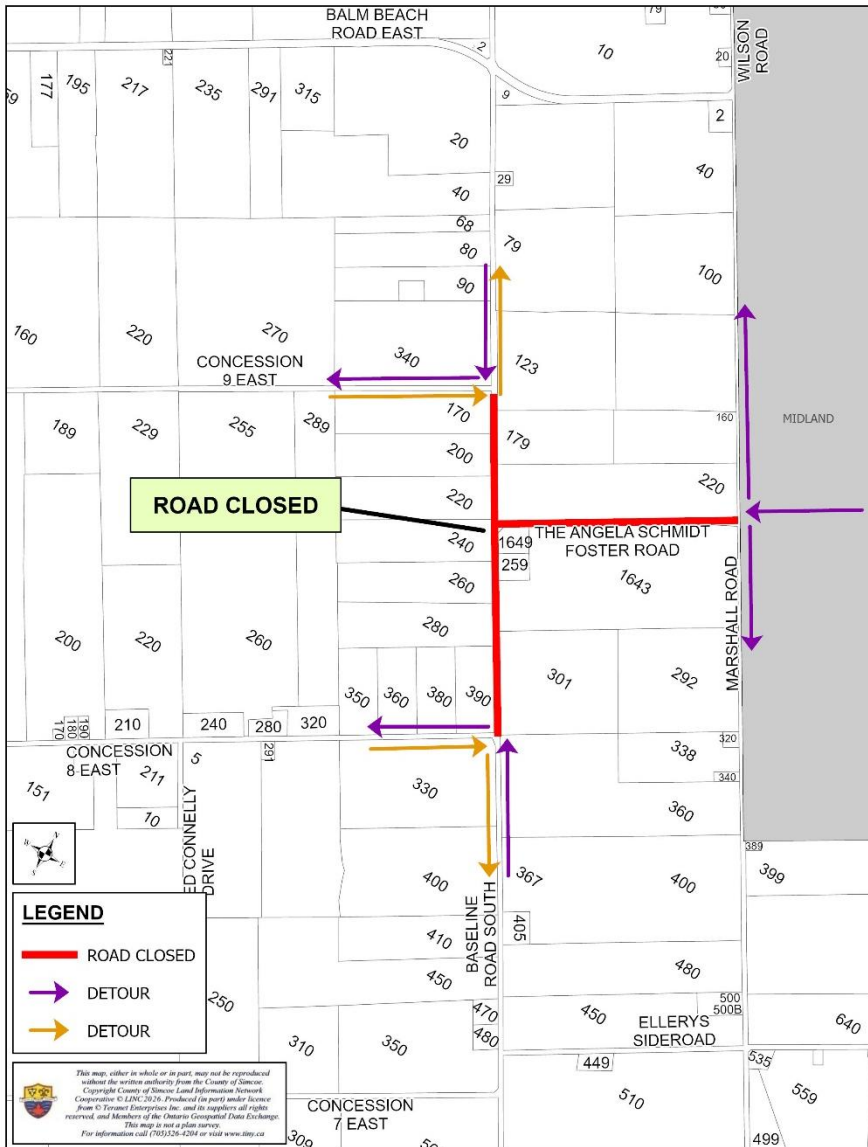
Receive Township of Tiny Public Notices directly to your phone or email: **Sign up for free at**
www.TinyConnect.ca





For more information:

Nick Rusnak
Engineering Technologist
nrusnak@tiny.ca
705-526-4204



For media inquiries, contact:
Jacqueline Brown, Communications Officer
jbrown@tiny.ca • 705-526-4204

Receive Township of Tiny Public Notices directly to your phone or email: **Sign up for free at**
www.TinyConnect.ca

