



Temporary Road Closure – Intersection of Baseline Road South and Angela Schmidt Foster Road

Date: May 25, 2026

TAKE NOTICE that the intersection of Baseline Road South and Angela Schmidt Foster Road will be temporarily closed for follow-up repaving works. The temporary road closure will be in effect on Thursday, May 28, 2026, from 9:00 a.m. to 3:30 p.m.

While access will be available for emergency vehicles and residents that live in this section of road, alternative routes are strongly encouraged where possible.

Detour routes are in effect:

North Bound on Baseline Road South

- Turn west on Concession 8 East toward County Road 6 North
- Turn north on County Road 6 North toward Concession 9 East
- Turn east on Concession 9 East
- Turn north on Baseline Road South

South Bound on Baseline Road South

- Turn west on Concession 9 East toward County Road 6 North
- Turn south on County Road 6 North toward Concession 9 East
- Turn east on Concession 8 East
- Turn north on Baseline Road South

West Bound on Angela Schmid Foster Road

- Use Marshall Road
- North toward Balm Beach Road West
- South toward Ellery Sideroad

Motorists are advised to use alternate routes during this time. Drivers are asked to exercise caution in the area and obey traffic control personnel and signage.

A key map is available on page two of this notice.

For media inquiries, contact:
Jacqueline Brown, Communications Officer
jbrown@tiny.ca • 705-526-4204

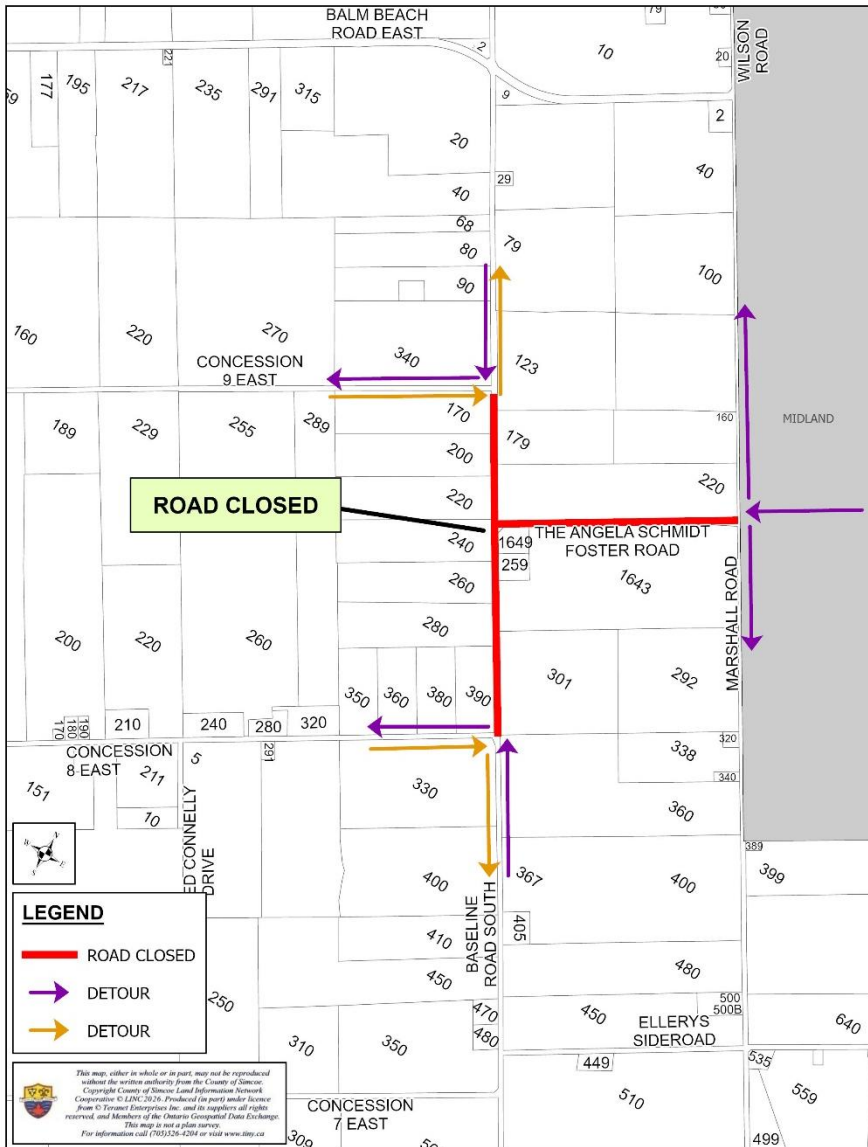
Receive Township of Tiny Public Notices directly to your phone or email: **Sign up for free at**
www.TinyConnect.ca





For more information:

Nick Rusnak
Engineering Technologist
nrusnak@tiny.ca
705-526-4204



For media inquiries, contact:
Jacqueline Brown, Communications Officer
jbrown@tiny.ca • 705-526-4204

Receive Township of Tiny Public Notices directly to your phone or email: **Sign up for free at**
www.TinyConnect.ca

