

Have questions? Contact us at elections@tiny.ca. Learn more at tiny.ca/Elections.

Election signs can be erected beginning Friday, August 21, 2026, and must be removed no later than 72 hours following election day. To view the whole by-law, visit tiny.ca/Elections.

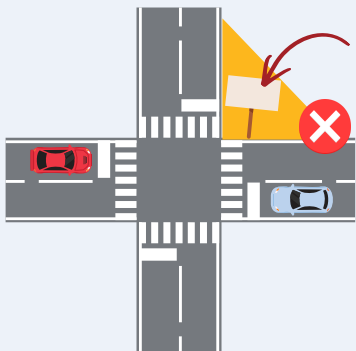
Public Property

No signs on Township property (e.g. parks, municipal buildings, facilities, voting locations, election help centre etc.)



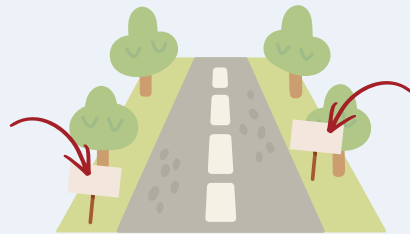
Sight Triangle

Election signs are prohibited within a sight triangle at the intersection of two roadways.



Road Allowance

No more than 300 signs on road allowances.

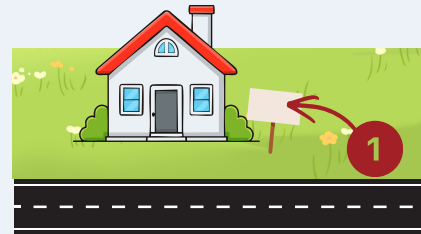


Signs are **NOT** permitted:

- on or over the street or sidewalk
- closer than 1m to the edge of the roadway
- the road allowance between a sidewalk and the edge of the street
- on a road allowance adjacent to parks

Private Property

The number of signs per candidate or registered third party on private property is limited to the number of streets abutting the property. E.g. if the property touches one street, one sign.



If the property is a corner lot, two signs are allowed.



Sign Specifics

Maximum size of a sign is 1.2m by 1.2m (4ft by 4 ft).

Maximum height of a sign is 1.5m (5 ft) when measured from grade to the highest point of the sign on road allowances. Does not apply to private property.

Cannot include flashing lights, rotating parts, electronic messaging, be illuminated or contain animated or digital components.

Signs must be maintained in a safe manner.

